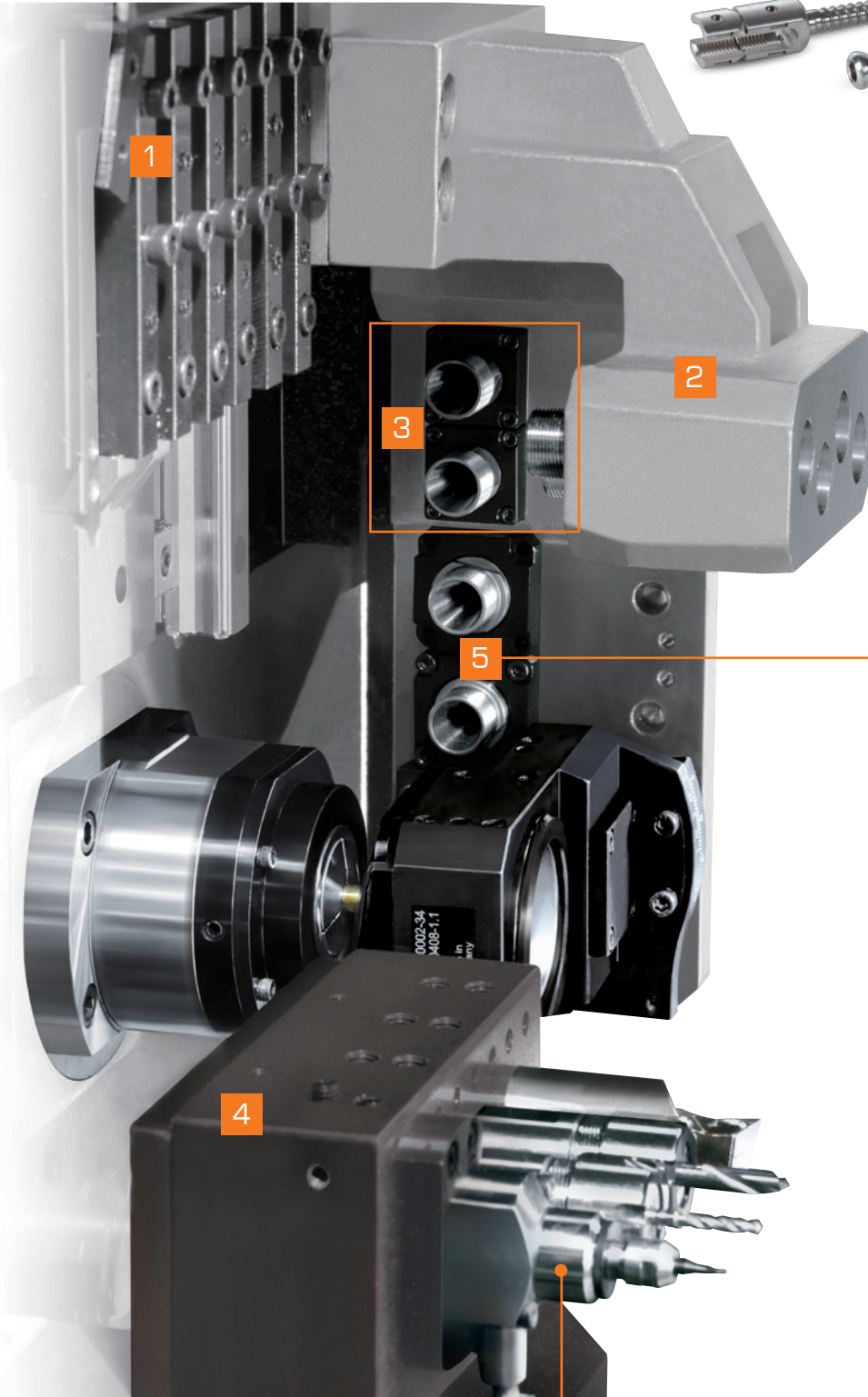


POLYGIM

DIAMOND

CSBIII-S

With Special Tool Device



Three pieces of cross driven tool holder (removable), three optional tool holders listed as below:

5



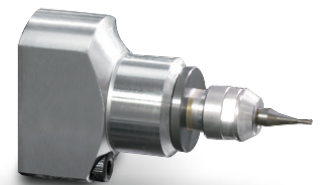
■ Cross Driving Tool Holder
(Must be optioned due to it is transmission device)



■ Off-center Driving Tool Holder



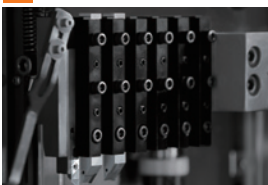
■ Thread Whirling Device



■ High Speed Spindle
80,000rpm

CSBIII-S Structure

1



O.D. Turning Tool

2



I.D. Stationary Tool Holder

3



Cross Working Driven Tool (unremovable)

4



Standard: 4 pcs Back I.D Stationary Tool Holder
Option: 4 pcs Back Working Driven Tool Holder

Option: Y2 axis with 4 pcs Back Working Driven Tool Holder

Model		DIAMOND 12CSBIII-S	DIAMOND 16CSBIII-S	DIAMOND 20CSBIII-S	DIAMOND 25CSBIII-S
Working Range	Max. Turning Dia.	Ø12.7mm	Ø16.5mm	Ø20mm	Ø26mm
	Max. Machining Length Per Chucking	200mm			
	Max. Drilling Dia. (Main Spindle)	Ø7mm	Ø10mm	Ø10mm	Ø10mm
	Max. Drilling Dia. (Sub Spindle)	Ø7mm			
	Max. Tapping Dia. (Main Spindle)	M6	M8	M8	M8
	Max. Tapping Dia. (Sub Spindle)	M6			
O.D. Tooling	Number of Tools	6			
	Dimension	□12X12X120			
I.D. Tooling	Number of Tools	4			
	Dimension	10mm (ER16)			
Cross Working Driven Tooling	Number of Tools	2+3			
	Dimension	10mm (ER16)			
	Speed	200~6,000rpm			
Back I.D. Tooling	Number of Tools	4 + 4			
	Dimension	10mm (ER16)			
Back Working Driven Tooling (Option)	Number of Tools	4 + 4			
	Dimension	10mm (ER16)			
	Speed	6,000rpm			
Spindle	Spindle Hole Dia.	Ø13mm	Ø17mm	Ø22mm	Ø30mm
	Spindle Speed	200~8,000rpm			
	Main Spindle Indexing Angle	C-axis			
Back Spindle	Spindle Hole Dia.	Ø13mm	Ø17mm	Ø22mm	Ø30mm
	Spindle Speed	200~8,000rpm			
	Max. Length for Front Ejection	50mm			
	Sub Spindle Indexing Angle	C-axis			
Rapid Speed	X2	24M / MIN			
	X1, Y1, Z1, Z2	30M / MIN			
Motor	Spindle Motor	2.2 kW	2.2 kW	3.7 kW	3.7 kW
	Back Spindle Motor	2.2 kW	2.2 kW	3.7 kW	3.7 kW
	X1 Axis Motor	1 kW			
	Y1, Z1, X2, Z2 Axes Motor	1 kW			
	Y2 Axis Motor (Option)	1 kW			
	Coolant Pump Motor	0.25 kW			
	Lubrication Motor	4 w			
	Cross Driven Tool Motor	1.5 kW			
	Back Driven Tool Motor (Option)	0.4 kW			
Machine Dimensions	Y2 Axis with Back Driven Tool Motor (Option)	1.5 kW			
	Center Height	890mm			
	Weight	1,920kg	2,070kg	2,120kg	2,170kg
Air	Machine Dimensions	2,440 x 1,430 x 1,650mm			
	Air pressure	5kg/cm			
	Air Supply	10L/min			

■ Standard Accessories:

1. Main Spindle
2. Back Spindle
3. Working Light
4. Coolant System
5. Part off Detective Sensor
6. Fixed Bushing (Except 25BIII/25CSBIII)
7. Live Bushing
8. Part Catcher
9. 6 pcs O.D. Turning Tool Holder
10. 4 pcs I.D. Stationary Tool Holder
11. 4 pcs Back I.D. Stationary Tool Holder
12. 4 pcs Back I.D. Stationary Tool Holder
13. 2 pcs+3 pcs Cross Working Driven Tool Holder

■ Option Accessories:

1. CS Axis (0.001° Orientation)
2. Chip Conveyor + Bucket
3. Thread Whirling Device
4. Cross Deiven Tool Device
5. Off-center Driven Tool Device
6. High Speed Spindle 80,000 rpm
7. 4 pcs Back Working Driven Tool Holder (If choose Y2 axis need to option)
8. Y2 axis with 4 pcs Back Working Driven Tool Holder



POLY GIM

POLY GIM MACHIANERY CO., LTD.

TEL: +886-37-981220 • 980599
 FAX: +886-37-985306
 www.polygim.com.tw
 polygim@ms69.hinet.net

